



Skyland Fire & Rescue Annual Report 22/23

Annual Report - July 1, 2022 to June 30, 2023

The Skyland Fire & Rescue Department is a full-service fire and emergency medical service agency providing Fire suppression services, advanced pre-hospital life support, Rescue, and community risk reduction to the citizens of the Skyland area.

MESSAGE FROM THE CHIEF



Since 1954, the courageous men and women of the Skyland Fire & Rescue have been working to provide emergency care to those who live, work and play in the Skyland area. Much has changed since the beginnings of our Fire Department, but one thing that hasn't changed is our commitment to serve others.

Our community is safer today because of the cumulative dedication and foresight of those decisions both past and present. Today, 85 firefighters wear a patch on their shoulder that reminds them of the faith and trust that has been bestowed upon each one of us. It's a symbol of our commitment to excellence that we take very seriously.

The dedicated professionals of the Skyland Fire & Rescue are devoted to your safety and wellbeing. Whether assigned to work on a fire truck, ambulance, or administrative office, the men and women of the Skyland Fire & Rescue are here, always to serve you.

We thank each of our community members for the support and trust that you place in our members and department as our goal is to provide the very best of emergency services to each of you.

- **Trevor Lance**, Fire Chief, Skyland Fire & Rescue.



MISSION STATEMENT & DEPARTMENT VALUES

The MISSION of Skyland Fire and Rescue is to protect lives and property through education and training, minimize potential disasters and provide exceptional customer service.

- **Integrity**
 - How we act with honesty, transparency, strong moral principles and good ethics.
- **Respect**
 - Admiration and Honor that is earned and reciprocated with humility and understanding.
- **Passion**
 - Having a desire and strong emotion to help and support our organization and others who are in need while demonstrating pride and ownership in the organization and our profession.
- **Strength**
 - Having pride and ownership with the organization through progressive planning and accepting the responsibility of our community and organization while fulfilling the needs of our personnel and ensuring stability through quality leadership.
- **Professionalism**
 - Meeting the character qualities expected of our organization, profession, and community while maintaining a positive, skilled, and knowledgeable image in a progressive and efficient manner.

TABLE OF CONTENTS

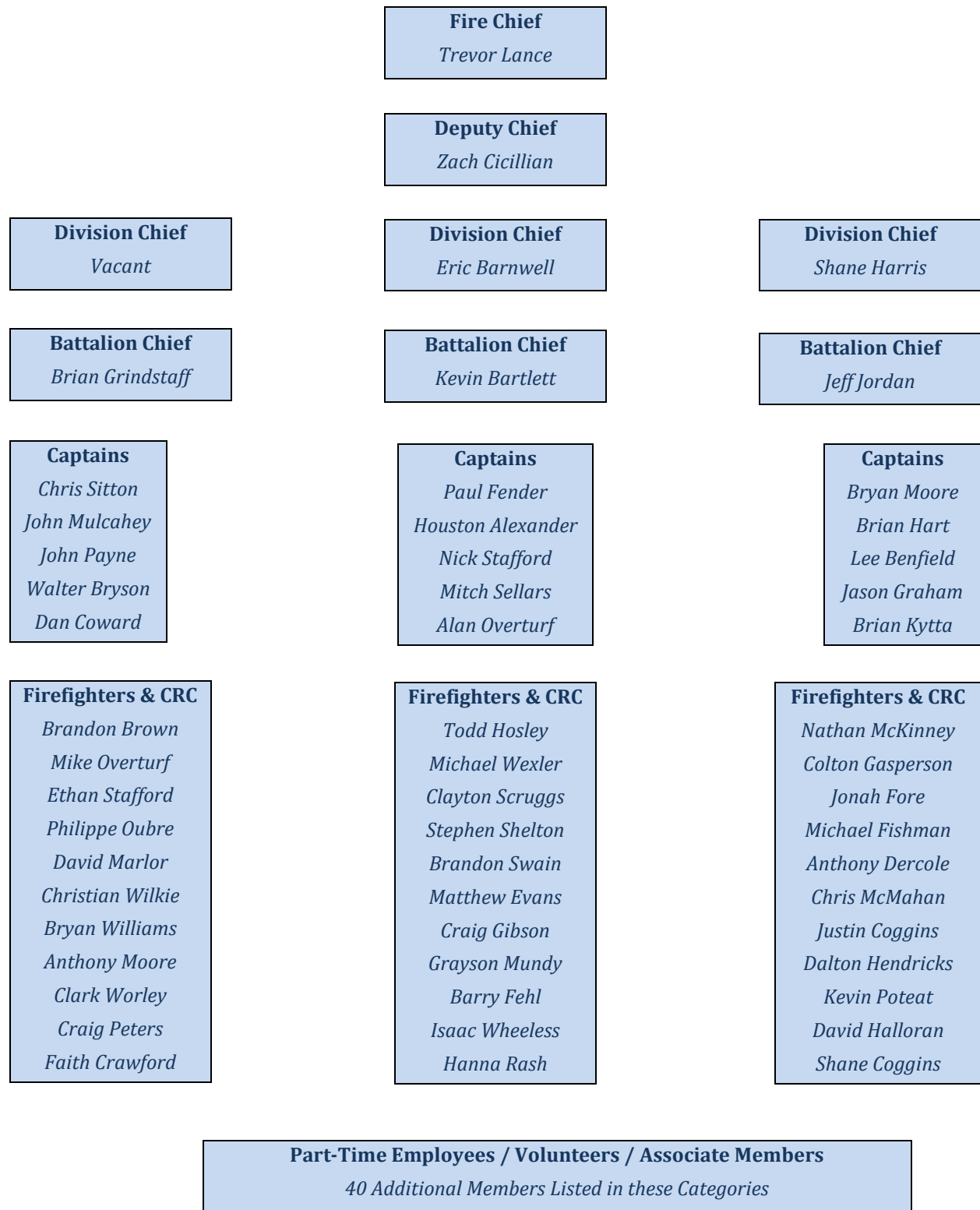
- Message from the Chief..... Pg. 1
- Mission Statement & Department Values.....Pg. 2
- Department Information.....Pg. 4
- Organizational Chart.....Pg. 5
- Station Information.....Pg. 6
- Operations Overview.....Pg. 7
- Training Overview.....Pg. 8
- Total Call Log.....Pg. 9-13
 - Incident Count
 - Overlapping Calls
 - Average Response Time
 - Mutual Aid
 - Loss Reduction
 - Incidents by Day
 - Incidents by Hour
 - Incidents by Month
 - Incidents Breakdown by Percentages
- Budget Report.....Pg. 14-15
- Coming Soon.....Pg. 16
- Thank You!.....Pg. 17

DEPARTMENT INFORMATION



Skyland is located in the mountains of Western North Carolina at a base elevation of 2,000 feet above sea level. The topography of the jurisdiction varies from flat valley floor and rolling hills to steep mountains which rise to more than 3,000 feet above sea level. The department protects areas which have population densities 28,000 people. Land area of approximately 54 square miles.

Department Organizational Chart



STATION INFORMATION

Fire Department Headquarters

PO Box 640 · Skyland, NC 28776 (Mailing address) · **828-684-6421** (Dept. Main-line)
<http://www.skylandfire.com>

STATION 21 – Headquarters.....# 9 Miller Road S. Asheville NC, 28803

APPARATUS:

Squad 21 Pierce Pumper / Rescue
Tac 21 Chevrolet Truck – Medical Response
Brush 21 Chevrolet – Brush Truck
Chief 21 Chevrolet – Command Vehicle
Car 21 Community Risk Coordinator

STATION 21-2 – Avery's Creek..... # 899 Glen Bridge Road SE. Arden NC, 28704

APPARATUS:

Engine 21-2 Pierce Pumper / Tanker
Rescue 21 Saber Pierce – Rescue Truck
Tanker 21-2 Freightliner – Tanker Truck
Brush 21-2 Chevrolet – Brush Truck
Tac 21-2 Chevy – Medical Response
Chief 21-2 Chevy – Command Vehicle

STATION 21-3 – Bishop..... # 310 Williams Road. Fletcher NC, 28732

APPARATUS:

Engine 21-3 Pierce Pumper / Tanker
Tanker 21-3 Peirce Pumper / Tanker
Tac 21-3 Chevrolet Tahoe – Medical Response
Brush 21-3 Ford – Brush Truck

STATION 21-4 – Biltmore Forest.... # 7 Valley Springs Road. Asheville NC, 28803

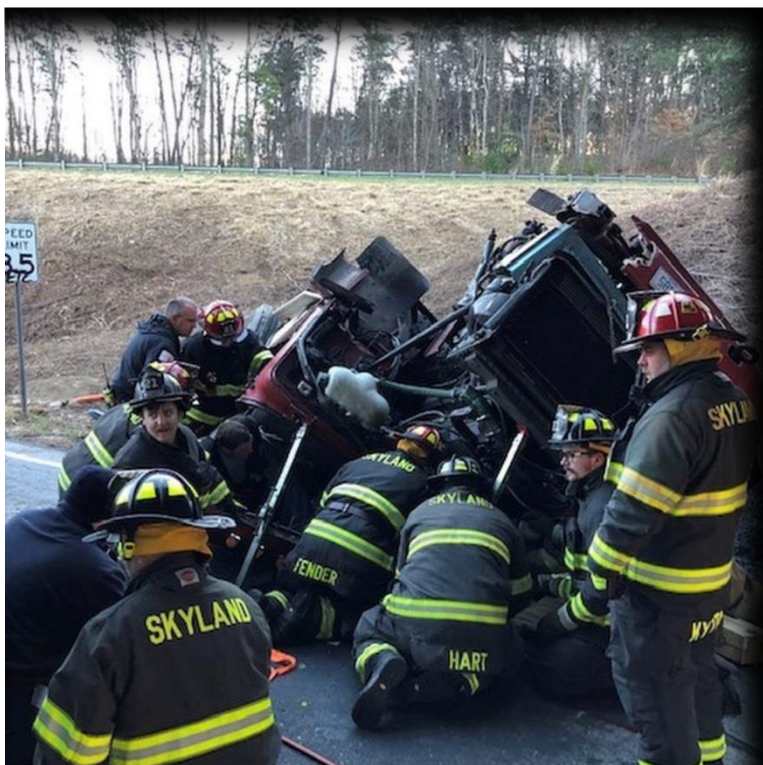
APPARATUS

Engine 21-4 Pierce Pumper / Tanker
Engine 21-5 Freightliner Pumper
Brush 21-4 Chevrolet – Brush / Medical Response

OPERATIONS OVERVIEW

Skyland Fire's Operation Division is responsible for ensuring that our people and equipment are ready to safely and effectively respond to 911 calls. This response capability is maintained by 18 Firefighter/ Emergency Medical Technicians who are on-duty around the clock, responding from four fire stations within the community of Skyland.

Calls for emergency medical services (EMS) continued to account for the largest percentage of Skyland's emergency responses in 2022 / 2023. In addition to EMS, Skyland Fire & Rescue maintains "all-hazards" response capabilities that match the risks in our community. In addition to fire suppression, these capabilities include technical rescue disciplines such as high / low angle rope rescue; confined space, trench, motor vehicle, and collapse rescue; hazardous materials response; and water rescue.



Skyland Fire Department serves the community of 54 square miles with 4 stations and 18 personnel on each shift with 24 hour coverage. These stations are located in areas to minimize response times to the community and are broken up in 4 response districts. The 18 personnel per shift make-up (4) Engine Companies, a Division Chief, Battalion Chief and Paramedic Community Risk Coordinator. Skyland Fire Department provides several services to the community, including but not limited, Fire Protection, EMS, Rescue, Haz-mat Ops, and Public Education.

TRAINING OVERVIEW

Skyland Fire's Training Division

Skyland firefighters fill many different roles to protect the community. Firefighters are cross-trained in emergency medicine, auto extrication techniques, rescue disciplines, fire control and suppression, safe responses to hazardous materials spills, water rescue and many other techniques in order to meet the needs of the community. Training all Skyland firefighters for numerous emergencies is ongoing and challenging. As changes to current standards by the National Fire Protection Association (NFPA) and the Code of Federal Regulations (CFR) are constantly altering training requirements, training staff are continuously revising and updating training programs to meet new standards.



A majority of our training is conducted as part of the firefighter's normal work day. Much of this training is overseen by the company officer assigned to a crew or station. Training Division staff provide training in specialty topics or high risk, low frequency training such as live fire, auto extrication, water rescue, etc...

The steady growth of the Skyland fire district presents numerous challenges for operations and training alike. New building designs, new construction methods, and increasing density combine to present unique problems for our firefighters.

Skyland Fire & Rescue's training for 2022 /2023 – Total class – 7000

Total of Personnel Hours – 27,843.70

TOTAL CALL LOG

Incident Count	
<i>INCIDENT TYPE</i>	<i># INCIDENTS</i>
EMS	2093
FIRE	1514
TOTAL	3607

OVERLAPPING CALLS	
<i># OVERLAPPING</i>	<i>% OVERLAPPING</i>
1510	41.86

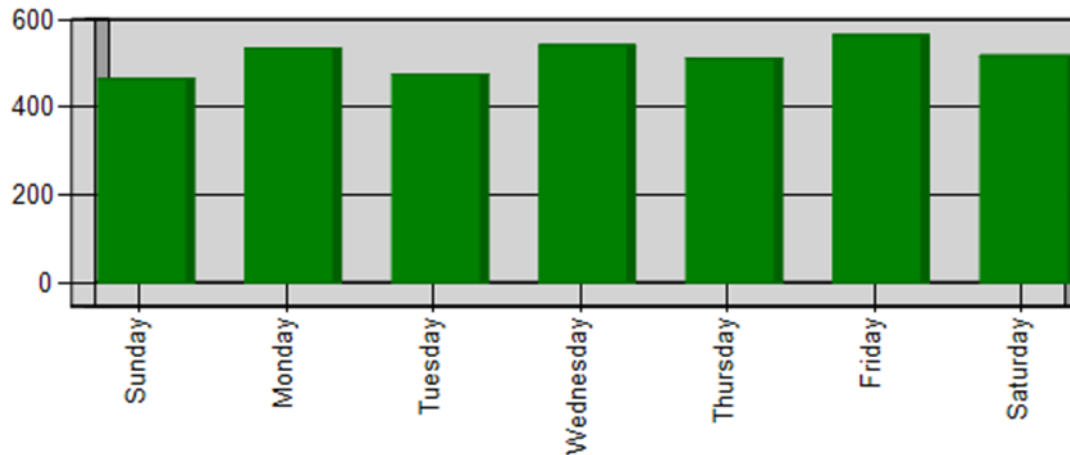
AVERAGE RESPONSE TIME		
<i>STATION</i>	<i>EMS</i>	<i>FIRE</i>
Avery's Creek Station	0:05:54	0:05:26
Biltmore Forest Station	0:05:40	0:06:38
Bishop Station	0:06:07	0:06:02
Main Station	0:05:58	0:06:05
	AVERAGE FOR ALL CALLS	0:05:55

MUTUAL AID	
<i>AID TYPE</i>	<i>TOTAL</i>
Aid Given	152
Aid Received	95

LOSS REDUCTION	
<i>PRE-INCIDENT VALUE</i>	<i>LOSSES</i>
\$20,625,300.00	\$736,500.00
Property Value Saved: \$19,888,800.00	

TOTAL CALL LOG

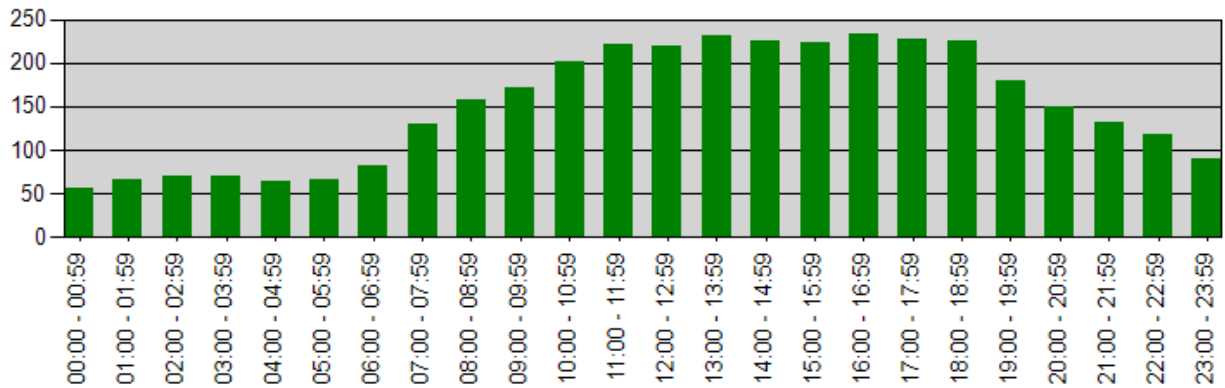
Incidents by Day of the Week



DAY OF THE WEEK	# INCIDENTS
Sunday	465
Monday	534
Tuesday	475
Wednesday	541
Thursday	511
Friday	564
Saturday	517
TOTAL	3607

TOTAL CALL LOG

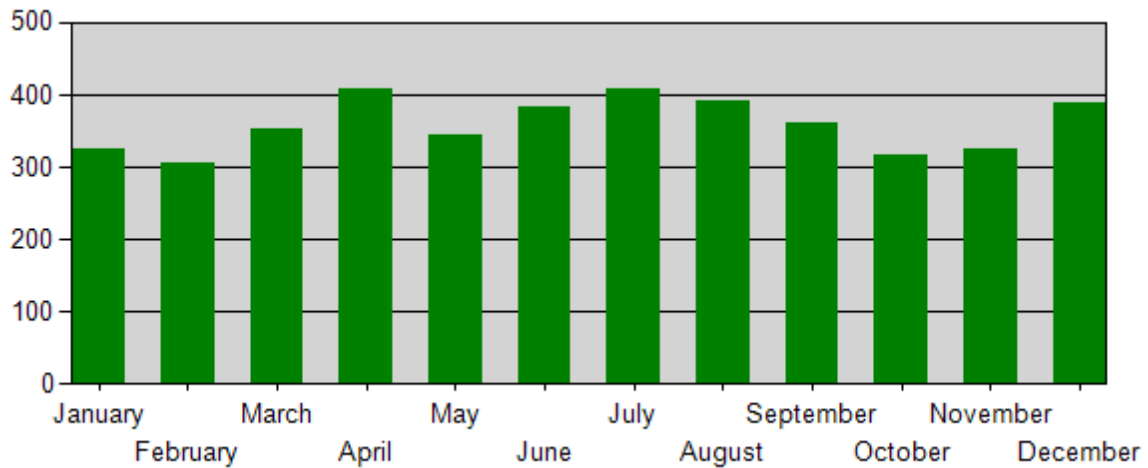
Incidents by Hour for Incident



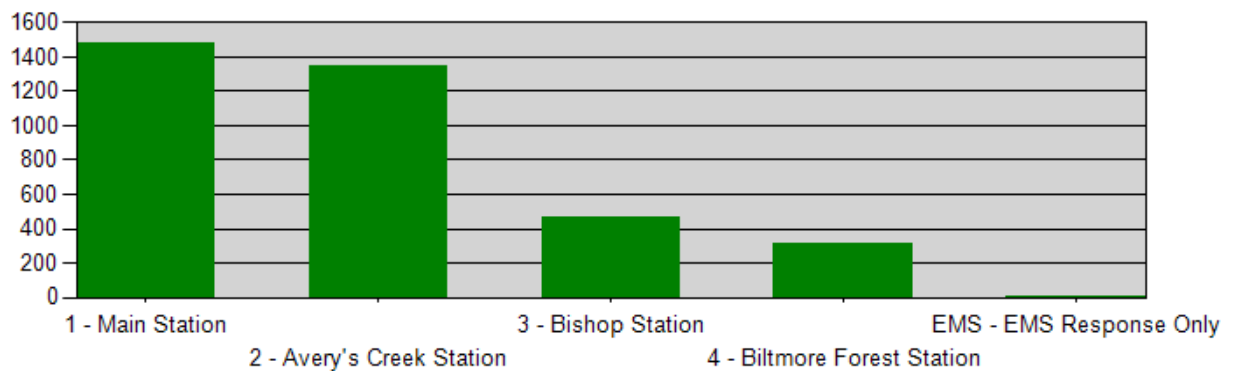
<i>HOURL</i>	<i># of CALLS</i>
00:00 – 00:59	56
01:00 – 01:59	66
02:00 – 02:59	69
03:00 – 03:59	69
04:00 – 04:59	64
05:00 – 05:59	65
06:00 – 06:59	82
07:00 – 07:59	130
08:00 – 08:59	157
09:00 – 09:59	171
10:00 – 10:59	202
11:00 – 11:59	222
12:00 – 12:59	220
13:00 – 13:59	231
14:00 – 14:59	225
15:00 – 15:59	224
16:00 – 16:59	234
17:00 – 17:59	227
18:00 – 18:59	225
19:00 – 19:59	180
20:00 – 20:59	149
21:00 – 21:59	132
22:00 – 22:59	118
23:00 – 23:59	89
TOTAL	3607

TOTAL CALL LOG

Incidents by Month



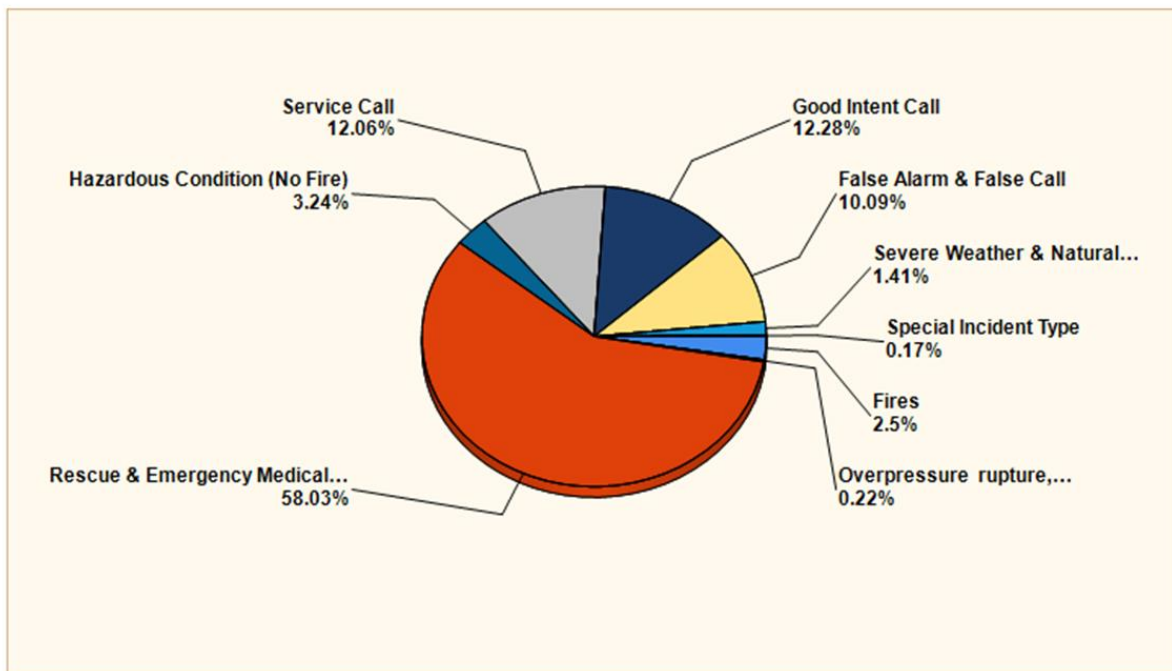
Incidents per Station



STATION	COUNT
Station 21 – Main Station (Headquarters)	1485
Station 21-2 – Avery’s Creek Station	1345
Station 21-3 – Bishop Station	466
Station 21-4 – Biltmore Forest Station	310
EMS – EMS Response Only	1
TOTAL	3607

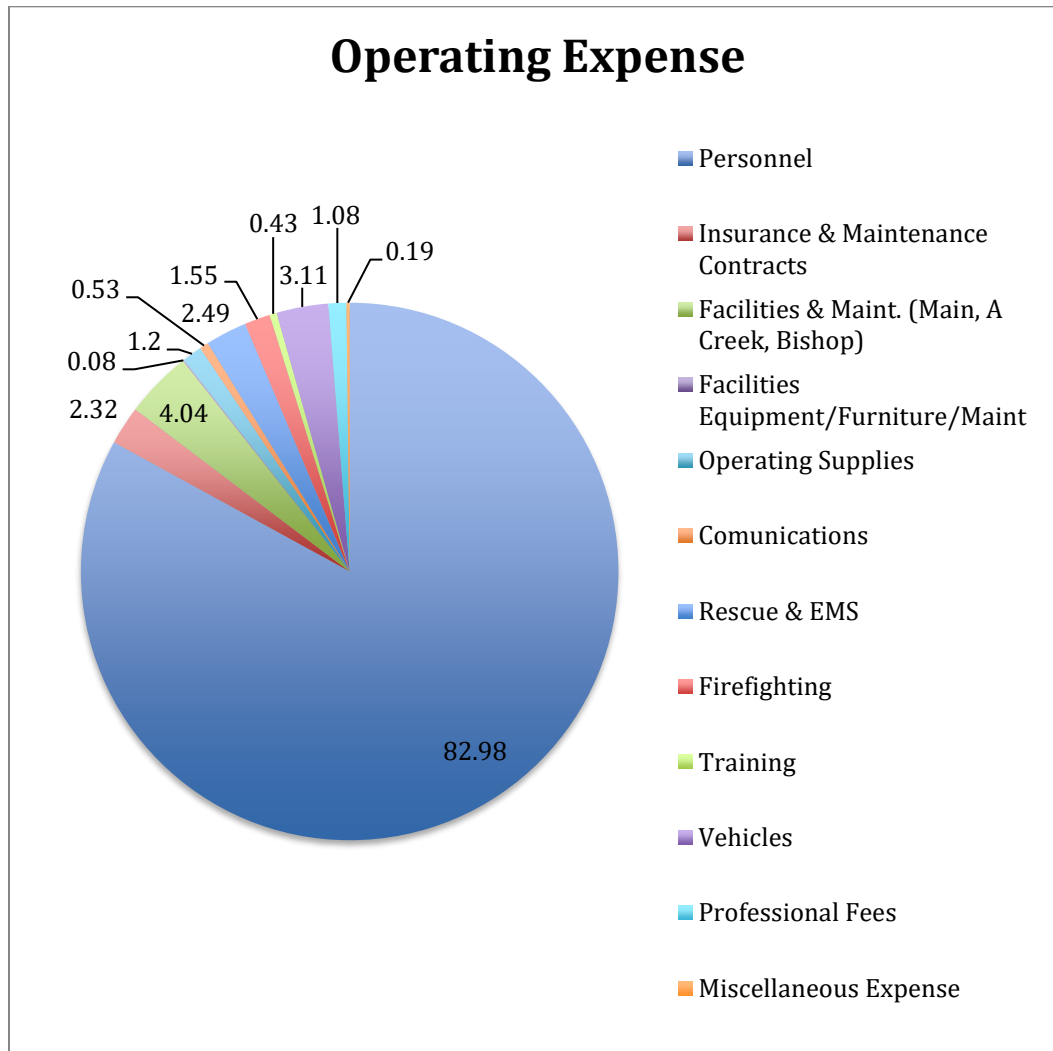
TOTAL CALL LOG

Incidents Breakdown by Percentages



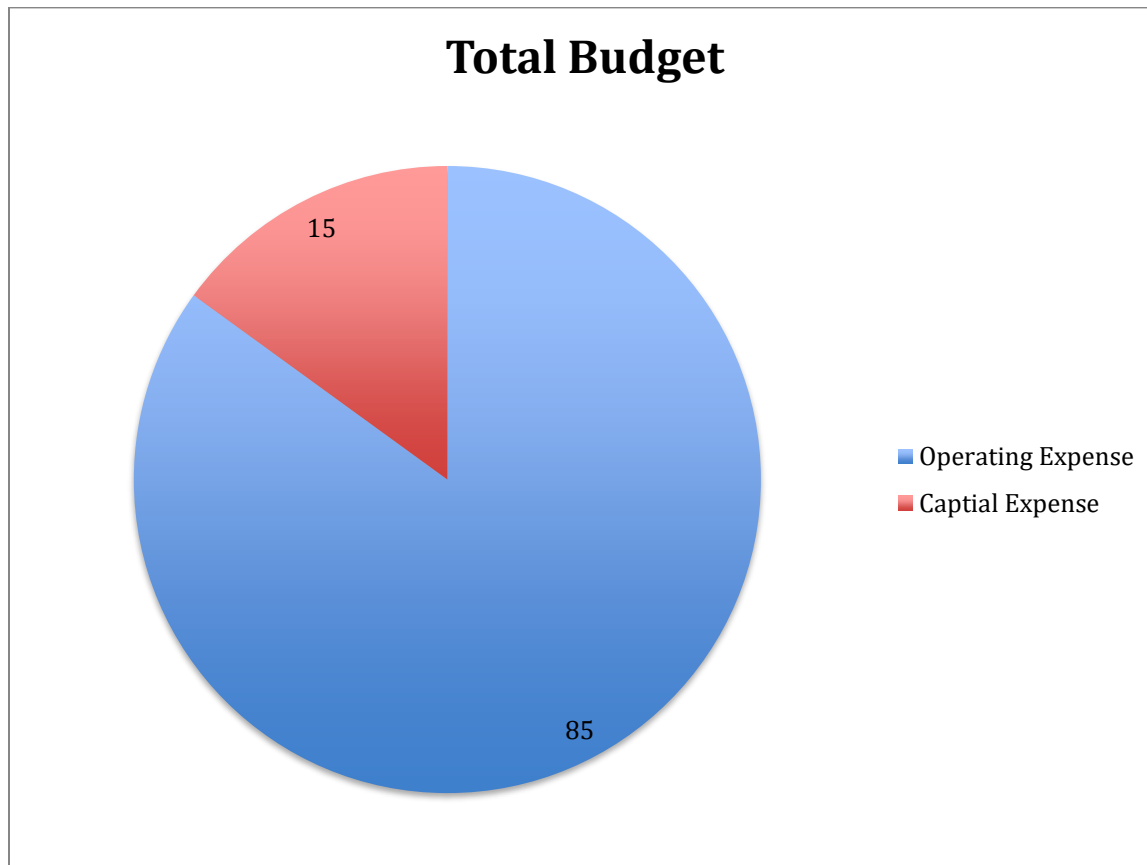
MAJOR INCIDENT TYPE	# INCIDENTS	% of TOTAL
Fires	90	2.5%
Overpressure rupture, explosion, overheated – no fire	8	0.22%
Rescue & Emergency Medical Service	2093	58.03%
Service Call	435	12.06%
Good Intent Call	443	12.28%
False Alarm & False Call	364	10.09%
Severe Weather & Natural Disaster	51	1.41%
Hazardous Condition (No Fire)	117	3.24%
Special Incident Type	6	0.17%
TOTAL	3607	100.00%

Budget Report 2022 / 2023



Personnel	\$7,022,300	85.98%
Insurance & Maintenance Contracts	\$146,386	2.32%
Facilities & Maint. (Main, A Creek, Bishop)	\$266,426	4.04%
Facilities Equipment/Furniture/Maint	\$7,400	0.08%
Operating Supplies	\$97,485	1.20%
Communications	\$34,602	0.53%
Rescue & EMS	\$86,000	1.49%
Firefighting	\$146,349	1.55%
Training	\$69,347	0.43%
Vehicles	\$214,814	3.11%
Professional Fees	\$73,979	1.08%
Miscellaneous Expense	\$14,000	0.19%

Budget Report 2022 / 2023



Total Operating Expenses

\$8,179,092 85.00%

Total Capital Expenses

\$680,000 15.00%

TOTAL EXPENSES (OPERATING + CAPITAL)

\$8,859,092

Stay connected with what's going.....



A Special Fire Department App that will connect with the community!

- Emergency Plan
- Notifications
- Upcoming Events
- Safety / Outreach
- Local Resources
- News & Live Alerts
- Much More

For Free in the App Store or Google Play

Thank You!

Skyland Fire & Rescue would like to thank the community for its support!



Skyland Fire & Rescue

skyland_fire_rescue

www.skylandfire.com